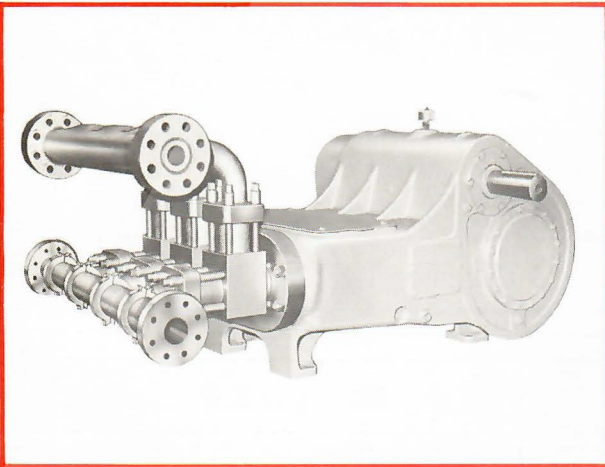


Specifications

English Metric

Pump Size (Max. Plunger Dia. x Stroke)	inches	3 1/2 x 8	mm	89 x 203
Standard Plunger Sizes	inches	2 1/2, 2 3/4, 3, 3 1/8, 3 1/4, 3 3/8 and 3 1/2	mm	64, 67, 70, 73, 76, 79, 83, 86 and 89
Rated bhp at 225 rpm	hp	300	kW	224
Maximum Working Pressure:				
Discharge	psi	4000	kPa	27579
Suction	psi	720	kPa	4964
Two Flanged Suction Connections: Pipe Size	inches	4	mm	102
ANSI Rating	class	300	class	300
ANSI Flaring	Flat Face	3	class	Flat Face
Two Flanged Discharge Connections: Pipe Size	inches	3	mm	76
ANSI Rating	class	2500	class	2500
ANSI Flaring	R.T.J.	R.T.J.	R.T.J.	R.T.J.
Gear Unit Reduction Ratio: (Standard)		4.07:1		4.07:1
(Optional)		2.02:1 3.28:1 5.23:1		2.02:1 3.28:1 5.23:1
Pinion Shaft Extension:				
Diameter	inches	4.495	mm	114
Length	inches	9 1/2	mm	251
Keyway (Width x Depth)	inches	1 x 1 1/8	mm	25 x 13
Rated Plunger Load	pounds	20000	N	88964
Oil Capacity (Crankcase + Gearcase)	gallons	22	litres	83
Weight (On Wood Shipping Skids) (Est.)	pounds	8500	kg	3856



Plunger Diameter

Inches	mm
2 1/2 - 2 1/2	60 - 64
2 3/4 - 2 3/4	67 - 70
2 7/8 - 3	73 - 76
3 1/8 - 3 1/4	79 - 83
3 3/8 - 3 1/2	86 - 89

Stuffing Box Bore

Inches	mm
3 1/4	83
3 3/8	92
3 7/8	98
4 1/8	108
4 3/8	111

Performance Data

(Volumes Indicated are Displacement of Noncompressible Fluid)
ENGLISH UNITS

Plgr. Dia. In.	Plgr. Area (Sq. In.)	Displacement Gal. Per Rev.	Max. Pressure psi	100 rpm		125 rpm		150 rpm		175 rpm		200 rpm		225 rpm	
				bpd	gpm	bpd	gpm	bpd	gpm	bpd	gpm	bpd	gpm	bpd	gpm
2 1/2	4.9087	.5100	4000	1749	51.00	2187	63.75	2624	76.50	3061	89.25	3499	102.00	3936	114.75
2 3/4	5.4119	.5623	3690	1929	56.23	2411	70.28	2893	84.34	3375	98.40	3857	112.45	4339	126.51
2 7/8	5.9396	.6171	3370	2117	61.71	2646	77.14	3175	92.56	3704	107.99	4233	123.42	4762	138.85
3	6.4918	.6745	3080	2313	67.45	2892	84.31	3470	101.17	4049	118.03	4627	134.89	5205	151.76
3 1/8	7.0686	.7344	2830	2519	73.44	3149	91.80	3778	110.16	4408	128.52	5038	146.88	5668	165.24
3 1/4	7.6699	.7969	2610	2738	79.69	3417	99.61	4100	119.53	4783	139.45	5467	159.37	6150	179.30
3 3/8	8.2958	.8619	2410	2956	86.19	3695	107.74	4434	129.28	5174	150.83	5913	172.38	6652	193.93
3 7/8	8.9462	.9295	2240	3188	92.95	3985	116.18	4782	139.42	5579	162.66	6376	185.89	7173	209.13
3 1/2	9.6211	.9996	2080	3429	99.96	4266	124.95	5143	149.94	6000	174.93	6857	199.92	7714	224.91
Brake Horsepower Required				133		166		200		233		266		300	

METRIC UNITS

Plgr. Dia. mm	Plgr. Area cm ²	Displacement L/rev.	Max. Pressure kPa	100 r/min.		125 r/min.		150 r/min.		175 r/min.		200 r/min.		225 r/min.	
				m ³ /d	L/s	m ³ /d	L/s	m ³ /d	L/s	m ³ /d	L/s	m ³ /d	L/s	m ³ /d	L/s
64	31.669	1.9306	27579	278	3.22	347	4.02	417	4.83	486	5.63	556	6.44	625	7.24
67	34.915	2.1284	25442	306	3.55	383	4.43	460	5.32	536	6.21	613	7.09	690	7.98
70	38.320	2.3360	23235	336	3.89	420	4.87	505	5.84	589	6.81	673	7.79	757	8.76
73	41.882	2.5532	21236	368	4.26	460	5.32	551	6.38	643	7.45	735	8.51	827	9.57
76	45.604	2.7800	19512	400	4.63	500	5.79	600	6.95	701	8.11	801	9.27	901	10.43
79	49.483	3.0165	17995	434	5.03	543	6.28	652	7.54	760	8.80	869	10.05	977	11.31
83	53.521	3.2626	16616	470	5.44	587	6.80	705	8.16	822	9.52	940	10.88	1057	12.24
86	57.717	3.5184	15444	507	5.86	633	7.33	760	8.80	887	10.26	1013	11.73	1140	13.19
89	62.071	3.7839	14341	545	6.31	681	7.88	817	9.46	954	11.04	1090	12.61	1226	14.19
Kilowatt—Input				100		126		151		176		201		224	

ENGLISH AND METRIC

Gear Unit Pinion Shaft r/min.	2.02:1 3.28:1 (Std.) 4.07:1 5.23:1	202 328 407 523	252 410 509 654	303 492 611 785	353 574 712 915	404 656 815 1045	454 738 916 1177
-------------------------------	---	--------------------------	--------------------------	--------------------------	--------------------------	---------------------------	---------------------------