

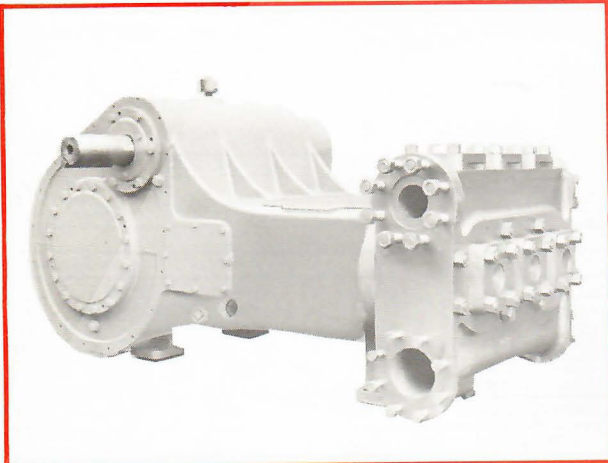
# B-358 Triplex

## Specifications

English

Metric

|  |         |                    |        |                                  |
|--|---------|--------------------|--------|----------------------------------|
| Pump Size (Max. Plunger Dia. x Stroke)       | inches  | 5 x 8              | mm     | 127 x 203                        |
| Standard Plunger Sizes                       | inches  | 4, 4 1/4,<br>and 5 | mm     | 102, 108,<br>114, 121<br>and 127 |
| Rated bhp at 225 rpm                         | hp      | 300                | kW     | 224                              |
| Maximum Working Pressure:                    |         |                    |        |                                  |
| Discharge                                    | psi     | 1590               | kPa    | 10963                            |
| Suction                                      | psi     | 275                | kPa    | 1896                             |
| Two Flanged Suction Connections: Pipe Size   | inches  | 6                  | mm     | 152                              |
| ANSI Rating                                  | class   | 150                | class  | 150                              |
| ANSI Facing                                  |         | Flat Face          |        | Flat Face                        |
| Two Flanged Discharge Connections: Pipe Size | inches  | 4                  | mm     | 102                              |
| ANSI Rating                                  | class   | 900                | class  | 900                              |
| ANSI Facing                                  |         | Large Recess       |        | Large Recess                     |
| Gear Unit Reduction Ratio: (Standard)        |         | 4.07:1             |        | 4.07:1                           |
| (Optional)                                   |         | 2.02:1             |        | 2.02:1                           |
|  |         | 3.28:1             |        | 3.28:1                           |
|  |         | 5.23:1             |        | 5.23:1                           |
| Pinion Shaft Extension: Diameter             | inches  | 4.495              | mm     | 114                              |
| Length                                       | inches  | 9 7/8              | mm     | 251                              |
| Keyway (Width x Depth)                       | inches  | 1 x 1/2            | mm     | 25 x 13                          |
| Rated Plunger Load                           | pounds  | 20000              | N      | 88964                            |
| Oil Capacity (Crankcase + Gearcase)          | gallons | 22                 | litres | 83                               |
| Weight (On Wood Shipping Skids) (Est.)       | pounds  | 8425               | kg     | 3822                             |



### Plunger Diameter

| Inches    | mm        |
|-----------|-----------|
| 4 - 4 1/4 | 102 - 108 |
| 4 1/2 - 5 | 114 - 127 |

### Stuffing Box Bore

| Inches | mm  |
|--------|-----|
| 5 1/4  | 133 |
| 6      | 152 |

## Performance Data

(Volumes Indicated are Displacement of Noncompressible Fluid)

### ENGLISH UNITS

| Plgr. Dia. In.            | Plgr. Area (Sq. In.) | Displacement Gal. Per Rev. | Max. Pressure psi | 100 rpm |        | 125 rpm |        | 150 rpm |        | 175 rpm |        | 200 rpm |        | 225 rpm |        |
|---------------------------|----------------------|----------------------------|-------------------|---------|--------|---------|--------|---------|--------|---------|--------|---------|--------|---------|--------|
|                           |                      |                            |                   | bpd     | gpm    | bpd     | gpm    | bpd     | gpm    | bpd     | gpm    | bpd     | gpm    | bpd     | gpm    |
| 4                         | 12.566               | 1.5056                     | 1590              | 4478    | 130.56 | 5598    | 163.20 | 6717    | 195.84 | 7837    | 228.48 | 8956    | 261.12 | 10076   | 293.76 |
| 4 1/4                     | 14.186               | 1.4739                     | 1410              | 5055    | 147.39 | 6319    | 184.24 | 7583    | 221.08 | 8847    | 257.93 | 10111   | 294.78 | 11375   | 331.63 |
| 4 1/2                     | 15.904               | 1.6524                     | 1260              | 5668    | 165.24 | 7085    | 206.55 | 8502    | 247.86 | 9919    | 289.17 | 11335   | 330.48 | 12752   | 371.79 |
| 4 3/4                     | 17.721               | 1.8411                     | 1130              | 6315    | 184.11 | 7894    | 230.14 | 9472    | 276.16 | 11051   | 322.19 | 12630   | 368.22 | 14209   | 414.25 |
| 5                         | 19.635               | 2.0400                     | 1020              | 6997    | 204.00 | 8746    | 255.00 | 10496   | 306.00 | 12245   | 357.00 | 13994   | 408.00 | 15744   | 459.00 |
| Brake Horsepower Required |                      |                            |                   | 133     |        | 166     |        | 200     |        | 233     |        | 266     |        | 300     |        |

### METRIC UNITS

| Plgr. Dia. mm     | Plgr. Area cm <sup>2</sup> | Displacement L/rev. | Max. Pressure kPa | 100 r/min.        |       | 125 r/min.        |       | 150 r/min.        |       | 175 r/min.        |       | 200 r/min.        |       | 225 r/min.        |       |
|-------------------|----------------------------|---------------------|-------------------|-------------------|-------|-------------------|-------|-------------------|-------|-------------------|-------|-------------------|-------|-------------------|-------|
|                   |                            |                     |                   | m <sup>3</sup> /d | L/s   | m <sup>3</sup> /d | L/s   | m <sup>3</sup> /d | L/s   | m <sup>3</sup> /d | L/s   | m <sup>3</sup> /d | L/s   | m <sup>3</sup> /d | L/s   |
| 102               | 81.0732                    | 4.9422              | 10963             | 712               | 8.24  | 890               | 10.30 | 1068              | 12.36 | 1245              | 14.41 | 1423              | 16.47 | 1601              | 18.53 |
| 108               | 91.5240                    | 5.5793              | 9722              | 803               | 9.30  | 1004              | 11.62 | 1205              | 13.95 | 1406              | 16.27 | 1607              | 18.60 | 1808              | 20.92 |
| 114               | 102.6083                   | 6.2550              | 8687              | 901               | 10.42 | 1126              | 13.03 | 1351              | 15.64 | 1576              | 18.24 | 1801              | 20.85 | 2027              | 23.46 |
| 121               | 114.3259                   | 6.9693              | 7791              | 1004              | 11.62 | 1254              | 14.52 | 1505              | 17.42 | 1756              | 20.33 | 2007              | 23.23 | 2258              | 26.13 |
| 127               | 126.6769                   | 7.7222              | 7033              | 1112              | 12.87 | 1390              | 16.09 | 1668              | 19.31 | 1946              | 22.52 | 2224              | 25.74 | 2502              | 28.96 |
| Kilowatt Required |                            |                     |                   | 100               |       | 126               |       | 151               |       | 176               |       | 201               |       | 226               |       |

### ENGLISH AND METRIC

|                               |               |     |     |     |     |      |      |
|-------------------------------|---------------|-----|-----|-----|-----|------|------|
| Gear Unit Pinion Shaft r/min. | 2.02:1        | 202 | 252 | 303 | 353 | 404  | 454  |
| at Gear Ratios of:            | 3.28:1        | 328 | 410 | 492 | 574 | 656  | 738  |
|                               | (Std.) 4.07:1 | 407 | 509 | 611 | 712 | 815  | 916  |
|                               | 5.23:1        | 523 | 654 | 785 | 915 | 1045 | 1177 |