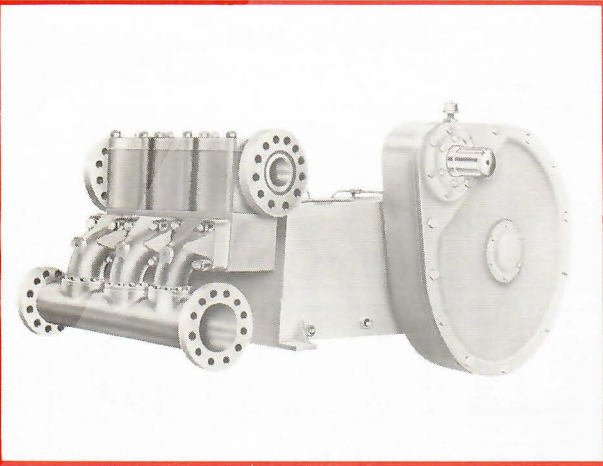


A348-5 Triplex

Specifications

English Metric

Pump Size (Max. Plunger Dia. x Stroke)	inches	5 x 8	mm	127 x 203
Standard Plunger Sizes	inches	3, 3¼, 3½, 4, 4¼, 4½, 4¾, and 5	mm	76, 83, 89, 95, 102, 108, 114, 121 and 127
Rated bhp at 260 rpm	hp	500	kW	373
Maximum Working Pressure:				
Discharge	psi	3500	kPa	24132
Suction	psi	720	kPa	4964
Two Flanged Suction Connections: Pipe Size	inches	8	mm	203
ANSI Rating		300	class	300
ANSI Facing		Flat Face		Flat Face
Two Flanged Discharge Connections: Pipe Size	inches	6	mm	152
ANSI Rating	class	1500	class	1500
ANSI Facing		R.T.J.		R.T.J.
Gear Unit Reduction Ratio: (Standard)		4.604:1		4.604:1
(Optional)		6.86:1		6.86:1
Pinion Shaft Extension: Diameter	inches	4.250	mm	108
Length	inches	4¾	mm	124
Keyway (Width x Depth)	inches	1 x ½	mm	25 x 13
Rated Plunger Load	pounds	28560	N	127041
Oil Capacity (Without Heat Exchanger)	gallons	53	litres	201
Weight (On Wood Shipping Skids) (Est.)	pounds	12000	kg	5443



Plunger Diameter		Stuffing Box Bore	
Inches	mm	Inches	mm
3	76	3¾	98
3¼ - 3½	83 - 89	4¼	108
3¾ - 4	95 - 102	4¾	121
4¼ - 4½	108 - 114	5¼	133
4¾ - 5	121 - 127	5¾	146

Performance Data

(Volumes Indicated are Displacement of Noncompressible Fluid)

Plgr. Dia. In.	Plgr. Area (Sq. In.)	Displacement Gal. Per Rev.	Max. Pressure psi	ENGLISH UNITS									
				100 rpm		140 rpm		180 rpm		220 rpm		260 rpm	
				bpd	gpm	bpd	gpm	bpd	gpm	bpd	gpm	bpd	gpm
3	7.0686	.7344	3500	2518	73.44	3525	102.82	4532	132.19	5539	161.57	6547	190.94
3¼	8.2958	.8619	3443	2955	86.19	4137	120.67	5319	155.14	6501	189.62	7883	224.09
3½	9.6211	.9996	2968	3427	99.96	4798	139.94	6169	179.93	7540	219.91	8911	259.90
3¾	11.045	1.1475	2586	3934	114.75	5508	160.65	7082	206.55	8655	252.45	10229	298.35
4	12.566	1.3056	2273	4476	130.56	6267	182.78	8057	235.01	9848	287.23	11638	339.46
4¼	14.186	1.4739	2013	5053	147.39	7075	206.35	9096	265.30	11117	324.26	13139	383.21
4½	15.904	1.6524	1796	5665	165.24	7932	231.34	10198	297.43	12464	363.53	14730	429.62
4¾	17.721	1.8411	1612	6312	184.11	8837	257.75	11362	331.40	13887	405.04	16412	478.68
5	19.635	2.0400	1455	6994	204.00	9792	285.60	12590	367.20	15387	448.80	18185	530.40
Brake Horsepower Required				192		269		346		423		500	

METRIC UNITS

Plgr. Dia. mm	Plgr. Area cm²	Displacement L/rev.	Max. Pressure kPa	METRIC UNITS									
				100 r/min.		140 r/min.		180 r/min.		220 r/min.		260 r/min.	
				m³/d	L/s	m³/d	L/s	m³/d	L/s	m³/d	L/s	m³/d	L/s
76	45.6037	2.7800	24132	400	4.63	560	6.49	721	8.34	881	25.69	1041	12.05
83	53.521	3.2626	23738	470	5.44	658	7.61	846	9.79	1034	11.96	1222	14.14
89	62.071	3.7839	20464	545	6.31	763	8.83	981	11.35	1199	13.87	1417	16.40
95	71.258	4.3437	17830	625	7.24	876	10.14	1126	13.03	1376	15.93	1626	18.82
102	81.071	4.9422	15672	712	8.24	996	11.53	1281	14.83	1566	18.12	1850	21.42
108	91.522	5.5793	13879	803	9.30	1125	13.02	1446	16.74	1768	20.46	2089	24.18
114	102.606	6.2550	12382	901	10.43	1261	14.60	1621	18.76	1982	22.94	2342	27.10
121	114.329	6.9693	11114	1004	11.62	1405	16.26	1806	20.91	2208	25.55	2609	30.20
127	126.677	7.7222	10032	1112	12.87	1557	18.02	2002	23.17	2446	28.31	2891	33.46
Kilowatt Input				143		201		258		316		373	

ENGLISH AND METRIC

Gear Unit Pinion Shaft r/min.	(Std.) 4.604:1	460	645	829	1013	1197
at Gear Ratio of:	6.86:1	686	960	1235	1509	1784