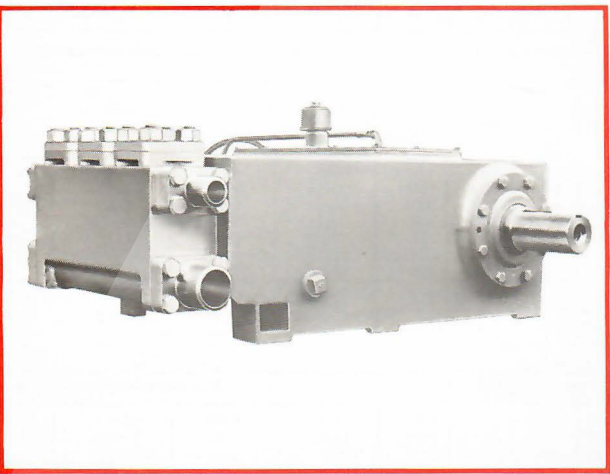


A324-H Triplex

Specifications

English Metric



Pump Size (Max. Plunger Dia. x Stroke)	inches	2¼ x 4	mm	57 x 102
Standard Plunger Sizes	inches	1¼, 1¾, 1½, 1¾, 2, 2½, and 2¼	mm	32, 35, 38, 41, 44, 48, 51, 54, and 57
Rated bhp at 450 rpm	hp	125	kW	93
Maximum Working Pressure:				
Discharge	psi	5000	kPa	34474
Suction	psi	275	kPa	1896
Two Suction Connections: Pipe Size	inches	3	mm	76
Classification		Sch. 80		Sch. 80
Prepared For Welding		V-Bevel		V-Bevel
Two Discharge Connections: Pipe Size	inches	2	mm	51
Classification		Sch. 160		Sch. 160
Prepared For Welding		V-Bevel		V-Bevel
Crankshaft Extension: Diameter	inches	3.750	mm	95
Length	inches	7½	mm	191
Keyway (Width x Depth)	inches	¾ x 7/16	mm	22
Pinion Shaft Extension (If Gear Unit Supplied):				
Diameter	inches	2.875	mm	73
Length	inches	6¾	mm	171
Keyway (Width x Depth)	inches	¾ x ¼	mm	19 x 6
Accessory Gear Units Reduction Ratios				
		2.596:1		2.596:1
		3.109:1		3.109:1
		3.947:1		3.947:1
		6.192:1		6.192:1
Rated Plunger Load	pounds	8250	N	36698
Oil Capacity: Crankcase	gallons	10	litres	38
Gear Unit (Capacity Varies with Gear Ratio)	gallons	—	litres	—
Weight: Pump Only	pounds	1742	kg	790
(On Wood Shipping Skids) (Est.)	pounds	2317	kg	1051

Plunger Diameter			Stuffing Box Bore		
Inches		mm	Inches		mm
1¼ - 1½		32 - 38	2¼		57
1¾ - 1¾		41 - 48	2½		67
2 - 2¼		51 - 57	3		76

Performance Data

(Volumes Indicated are Displacement of Noncompressible Fluid)
ENGLISH UNITS

Plgr. Dia. In.	Plgr. Area (Sq. In.)	Displacement Gal. Per Rev.	Max. Pressure psi	* 100 rpm		150 rpm		200 rpm		250 rpm		300 rpm		350 rpm		400 rpm		450 rpm	
				bpd	gpm	bpd	gpm	bpd	gpm	bpd	gpm	bpd	gpm	bpd	gpm	bpd	gpm	bpd	gpm
1¼	1.2272	.0637	5000	219	6.37	328	9.56	437	12.75	546	15.94	656	19.12	765	22.31	874	25.50	984	28.69
1¾	1.4849	.0771	5000	264	7.71	397	11.57	529	15.43	661	19.28	793	23.14	926	27.00	1058	30.85	1190	34.71
1½	1.7671	.0918	4669	315	9.18	472	13.77	629	18.36	787	22.95	944	27.54	1102	32.13	1259	36.72	1416	41.31
1¾	2.0739	.1077	3978	369	10.77	554	16.16	739	21.55	923	26.93	1108	32.32	1293	37.71	1478	43.09	1662	48.48
1¾	2.4053	.1249	3430	428	12.49	643	18.74	857	24.99	1071	31.24	1285	37.48	1499	43.73	1714	49.98	1928	56.23
1¾	2.7612	.1434	2988	492	14.34	738	21.52	984	28.69	1229	35.86	1475	43.03	1721	50.20	1967	57.37	2213	64.55
2	3.1416	.1632	2626	560	16.32	839	24.48	1119	32.64	1399	40.80	1679	48.96	1958	57.12	2238	65.28	2518	73.44
2½	3.5466	.1842	2326	632	18.42	948	27.64	1263	36.85	1579	46.06	1895	55.27	2211	64.48	2527	73.69	2843	82.91
2¼	3.9761	.2065	2075	708	20.65	1062	30.98	1416	41.31	1770	51.64	2125	61.96	2479	72.29	2833	82.62	3187	92.95
Brake Horsepower Required				28		42		56		69		83		97		111		125	

METRIC UNITS

Plgr. Dia. mm	Plgr. Area cm²	Displacement L/rev.	Max. Pressure kPa	* 100 r/min.		150 r/min.		200 r/min.		250 r/min.		300 r/min.		350 r/min.		400 r/min.		450 r/min.	
				m³/d	L/s	m³/d	L/s	m³/d	L/s	m³/d	L/s	m³/d	L/s	m³/d	L/s	m³/d	L/s	m³/d	L/s
32	7.9173	.2413	34473	35	.40	52	.60	69	.80	87	1.01	104	1.21	122	1.41	139	1.61	156	1.81
35	9.5799	.2920	34473	42	.49	63	.73	84	.97	105	1.22	126	1.46	147	1.70	168	1.95	189	2.19
38	11.4009	.3475	32192	50	.58	75	.87	100	1.16	125	1.45	150	1.74	175	2.03	200	2.32	225	2.61
41	13.3802	.4078	27427	59	.68	88	1.02	117	1.36	147	1.70	176	2.04	206	2.38	235	2.72	264	3.06
44	15.5179	.4730	23649	68	.79	102	1.18	136	1.58	170	1.97	204	2.36	238	2.76	272	3.15	306	3.55
48	17.8139	.5430	20601	78	.90	117	1.36	156	1.81	195	2.26	235	2.71	274	3.17	313	3.62	352	4.07
51	20.2683	.6178	18106	89	1.03	133	1.54	178	2.06	222	2.57	267	3.09	311	3.60	356	4.12	400	4.63
54	22.8810	.6974	16039	100	1.16	151	1.74	201	2.32	251	2.91	301	3.49	351	4.07	402	4.65	452	5.23
57	25.6521	.7819	14306	113	1.30	169	1.95	225	2.61	281	3.26	338	3.91	394	4.56	450	5.21	507	5.86
Kilowatt Required				21		31		41		52		62		72		83		93	

ENGLISH AND METRIC

Gear Unit Pinion	2.596:1	260	389	519	649	779	909	1038	1168
Shaft r/min. at	3.109:1	311	466	622	777	933	1088	1244	1399
Gear Ratios of:	3.947:1	395	592	789	987	1184	1381	1579	1776
	6.192:1	619	929	1238	1548	1858	2167	2477	2786

*For operations below 50 rpm and for reverse rotation, consult manufacturer for lubrication recommendations.