

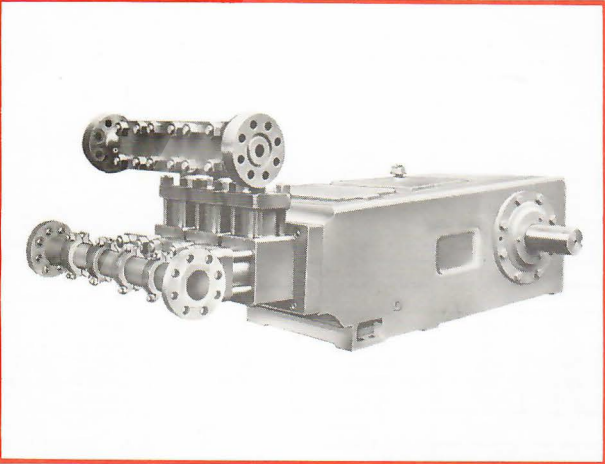
A316-H Triplex

Specifications

English

Metric

Pump Size (Max. Plunger Dia. x Stroke)	inches	1 7/8 x 6	mm	35 x 152
Standard Plunger Sizes	inches	1 1/2, 1 5/8, 1 3/4, 1 7/8, 1 15/16, and 1 7/8	mm	38, 40, 41, 43, 44, 46, and 48
Rated bhp at 320 rpm	hp	202	kW	151
Maximum Working Pressure:				
Discharge	psi	6000	kPa	41369
Suction	psi	300	kPa	2068
Two Flanged Suction Connections: Pipe Size	inches	3	mm	76
ANSI Rating	class	300	class	300
ANSI Facing				
Two Flanged Discharge Connections: Pipe Size	inches	2	mm	51
ANSI Rating	class	2500	class	2500
ANSI Facing				
Gear Unit Reduction Ratio: (Standard)		R. T. J.	R. T. J.	
(Optional)		4.44:1	4.44:1	
		1.59:1	1.59:1	
		1.78:1	1.78:1	
		2.487:1	2.487:1	
		5.48:1	5.48:1	
Crankshaft Extension: Diameter	inches	4.495	mm	114
Length	inches	8 3/8	mm	213
Keyway (Width x Depth)	inches	1 x 3/8	mm	25 x 10
Pinion Shaft Extension (If Gear Unit Supplied):				
Diameter	inches	3.438	mm	87
Length	inches	7 3/8	mm	187
Keyway (Width x Depth)	inches	7/8 x 7/16	mm	22 x 11
Rated Plunger Load	pounds	12500	N	55603
Oil Capacity: Crankcase	gallons	34	litres	129
Gear Unit (Capacity Varies with Gear Ratio)				
Weight: Pump Only	gallons	—	litres	—
(On Wood Shipping Skids) (Est.)	pounds	4725	kg	2143
Gear (Weight Varies with Gear Ratio) (Est.)	pounds	—	kg	—



Plunger Diameter		Stuffing Box Bore	
Inches	mm	Inches	mm
1 1/2 - 1 5/8	38 - 48	2 1/2	64

Performance Data

(Volumes Indicated are Displacement of Noncompressible Fluid)
ENGLISH UNITS

Plgr. Dia. In.	Plgr. Area (Sq. In.)	Displacement Gal. Per Rev.	Max. Pressure psi	100 rpm		150 rpm		200 rpm		250 rpm		300 rpm		320 rpm	
				bpd	gpm	bpd	gpm	bpd	gpm	bpd	gpm	bpd	gpm	bpd	gpm
1 1/2	1.7671	.1377	6000	472	13.77	708	20.65	944	27.54	1180	34.42	1416	41.31	1511	44.06
1 5/8	1.9175	.1494	6000	512	14.94	768	22.41	1025	29.88	1281	37.35	1537	44.82	1639	47.81
1 3/4	2.0739	.1616	6000	554	16.16	831	24.24	1108	32.32	1385	40.40	1662	48.48	1773	51.71
1 7/8	2.2365	.1743	5589	598	17.43	896	26.14	1195	34.86	1494	43.57	1793	52.28	1912	55.77
1 15/16	2.4053	.1874	5197	643	18.74	964	28.11	1285	37.48	1606	46.86	1928	56.23	2056	59.98
1 3/8	2.5802	.2011	4845	689	20.11	1034	30.16	1379	40.21	1723	50.26	2068	60.32	2206	64.34
1 7/8	2.7612	.2152	4527	738	21.52	1107	32.27	1475	43.03	1844	53.79	2213	64.55	2361	68.85
Brake Horsepower Required				63		95		126		158		189		202	

METRIC UNITS

Plgr. Dia. mm	Plgr. Area cm²	Displacement L/rev.	Max. Pressure kPa	100 r/min.		150 r/min.		200 r/min.		250 r/min.		300 r/min.		320 r/min.	
				m³/d	L/s	m³/d	L/s	m³/d	L/s	m³/d	L/s	m³/d	L/s	m³/d	L/s
38	11.4009	.5212	41368	75	.87	113	1.30	150	1.74	188	2.17	225	2.61	240	2.78
40	12.3708	.5656	41368	81	.94	122	1.41	163	1.89	204	2.36	244	2.83	261	3.02
41	13.3802	.6117	41368	88	1.02	132	1.53	176	2.04	220	2.55	264	3.06	282	3.26
43	14.4293	.6597	38535	95	1.10	142	1.65	190	2.20	237	2.75	285	3.30	304	3.52
44	15.5179	.7095	35831	102	1.18	153	1.77	204	2.36	255	2.96	306	3.55	327	3.78
46	16.6461	.7611	33403	110	1.27	164	1.90	219	2.54	274	3.17	329	3.81	351	4.06
48	17.8139	.8145	31213	117	1.36	176	2.04	235	2.71	293	3.39	352	4.07	375	4.34
Kilowatt Required				47		71		94		118		141		151	

ENGLISH AND METRIC

Gear Unit Pinion Shaft r/min.	1.59:1	159	239	318	398	477	509
at Gear Ratios of:	1.78:1	178	267	356	445	534	570
	2.487:1	249	373	497	622	746	796
	3.12:1	312	468	624	780	936	998
	(Std.) 4.44:1	444	666	888	1110	1332	1421
	5.48:1	548	822	1096	1370	1644	1754