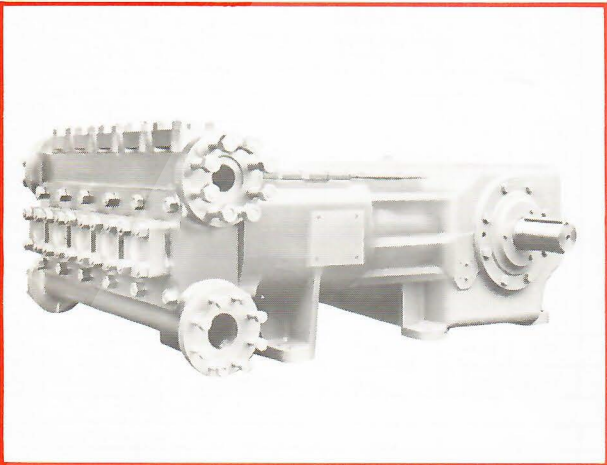


A-536 Quintuplex

Specifications

English Metric



Pump Size (Max. Plunger Dia. x Stroke)	inches	3 x 6	mm	76 x 152
Standard Plunger Sizes	inches	2, 2 1/8, 2 1/4, 2 3/8, 2 1/2, 2 5/8, 2 3/4, 2 7/8 and 3	mm	51, 54, 57, 60, 64, 67, 70, 73 and 76
Rated bhp at 360 rpm	hp	267	kW	199
Maximum Working Pressure: Discharge	psi	3180	kPa	21925
Suction	psi	720	kPa	4964
Two Flanged Suction Connections: Pipe Size	inches	4	mm	102
ANSI Rating	class	300	class	300
ANSI Facing	Flat Face		Flat Face	
Two Flanged Discharge Connections: Pipe Size	inches	3	mm	76
ANSI Rating	class	1500	class	1500
ANSI Facing	Large Recess		Large Recess	
Crankshaft Extension: Diameter	inches	4.495	mm	114
Length	inches	7 3/4	mm	197
Keyway (Width x Depth)	inches	1 x 3/8	mm	25 x 10
Pinion Shaft Extension (If Gear Unit Supplied):				
(For Belt or Chain Drive) Diameter	inches	4.495	mm	114
Length	inches	8 3/4	mm	222
Keyway (Width x Depth)	inches	1 x 1/2	mm	25 x 13
(For Direct Drive) Diameter	inches	3.375	mm	86
Length	inches	4 1/2	mm	114
Keyway (Width x Depth)	inches	3/8 x 7/16	mm	22 x 11
Accessory Gear Units Reduction Ratios		2.698:1		2.698:1
		3.680:1		3.680:1
		5.500:1		5.500:1
		7.316:1		7.316:1
		9.500:1		9.500:1
Rated Plunger Load	pounds	10000	N	44482
Oil Capacity: Crankcase	gallons	32	litres	121
Gear Unit	gallons	—	litres	—
Weight: Pump Only	pounds	6200	kg	2812
(On Wood Shipping Skids) (Est.)	pounds	2219	kg	1007
Gear Unit (Est.)				

Plunger Diameter

Inches	mm
2 - 2 1/8	51 - 60
2 1/2 - 3	64 - 76

Stuffing Box Bore

Inches	mm
3 1/4	83
4 1/8	105

Performance Data

(Volumes Indicated are Displacement of Noncompressible Fluid)

ENGLISH UNITS

Plgr. Dia. In.	Plgr. Area (Sq. In.)	Displacement Gal. Per Rev.	Max. Pressure psi	100 rpm		150 rpm		200 rpm		250 rpm		300 rpm		*320 rpm		360 rpm		
				bpd	gpm	bpd	gpm	bpd	gpm	bpd	gpm	bpd	gpm	bpd	gpm	psi	bpd	gpm
2	3.1416	.4080	3180	1399	40.80	2099	61.20	2799	81.60	3499	102.00	4198	122.40	4478	130.56	2800	5040	146.88
2 1/8	3.5466	.4606	2820	1580	46.06	2370	69.09	3160	92.12	3950	115.15	4740	138.18	5055	147.39	2480	5687	165.81
2 1/4	3.9761	.5164	2520	1771	51.64	2657	77.46	3542	103.27	4428	129.09	5313	154.91	5668	165.24	2220	6376	185.89
2 3/8	4.4301	.5753	2260	1973	57.53	2960	86.30	3947	115.07	4934	143.84	5920	172.60	6315	184.11	1980	7104	207.12
2 1/2	4.9087	.6375	2040	2187	63.75	3280	95.62	4373	127.50	5467	159.37	6560	191.25	6997	204.00	1800	7872	229.50
2 5/8	5.4119	.7028	1840	2411	70.28	3616	105.43	4822	140.57	6027	175.71	7232	210.85	7714	224.91	1630	8679	253.02
2 3/4	5.9396	.7714	1680	2646	77.14	3969	115.71	5292	154.27	6615	192.84	7937	231.41	8467	246.84	1480	9525	277.69
2 7/8	6.4918	.8431	1540	2892	84.31	4338	126.56	5784	168.62	7230	210.77	8675	252.93	9254	269.79	1360	10411	303.51
3	7.0686	.9180	1420	3149	91.80	4723	137.70	6297	183.60	7872	229.50	9446	275.40	10076	293.76	1250	11335	330.48

Brake Horsepower Required		84	126	168	210	250	267	267
---------------------------	--	----	-----	-----	-----	-----	-----	-----

METRIC UNITS

Plgr. Dia. mm	Plgr. Area cm²	Displacement L/rev.	Max. Pressure kPa	100 r/min.		150 r/min.		200 r/min.		250 r/min.		300 r/min.		*320 r/min.		360 r/min.		
				m³/d	L/s	m³/d	L/s	m³/d	L/s	m³/d	L/s	m³/d	L/s	m³/d	L/s	kPa	m³/d	L/s
51	20.268	1.5444	21925	222	2.57	334	3.86	445	5.15	556	6.44	667	7.72	712	8.24	19305	801	9.27
54	22.881	1.7435	19443	251	2.91	377	4.36	502	5.81	628	7.26	753	8.72	803	9.30	17099	904	10.46
57	25.652	1.9547	17374	281	3.26	422	4.89	563	6.52	704	8.14	844	9.77	901	10.43	15306	1013	11.73
60	28.581	2.1779	15582	314	3.63	470	5.44	627	7.26	784	9.07	941	10.89	1004	11.62	13652	1129	13.07
64	31.669	2.4132	14065	347	4.02	521	6.03	695	8.04	869	10.05	1042	12.07	1112	12.87	12411	1251	14.48
67	34.915	2.6605	12686	383	4.43	575	6.65	766	8.87	958	11.09	1149	13.30	1226	14.19	11238	1379	15.96
70	38.320	2.9200	11583	420	4.87	631	7.30	841	9.73	1051	12.17	1261	14.60	1346	15.57	10204	1514	17.52
73	41.883	3.1914	10618	460	5.32	689	7.98	919	10.64	1149	13.30	1379	15.96	1471	17.02	9377	1654	19.15
76	45.604	3.4750	9791	500	5.79	751	8.69	1001	11.58	1251	14.48	1501	17.38	1601	18.53	8618	1801	20.85

Kilowatt-Input		63	94	126	157	188	201	201
----------------	--	----	----	-----	-----	-----	-----	-----

ENGLISH AND METRIC

Gear Unit Pinion	2.698:1	270	405	540	675	809	863	971
Shaft r/min.	3.680:1	368	552	736	920	1104	1178	1325
at Gear Ratios of:	5.500:1	550	825	1100	1375	1650	1760	1980
	7.316:1	732	1097	1463	1829	2195	2341	2634
	9.500:1	950	1425	1900	2375	2850	3040	3420

*Pump speeds in excess of 320 rpm require specific approval of the manufacturer. Viscosity, temperature, velocities and other fluid properties or characteristics combined with the inherent mechanical efficiencies of pumps may result in less than optimum operations. We have applied this conservatism to assure you total performance.