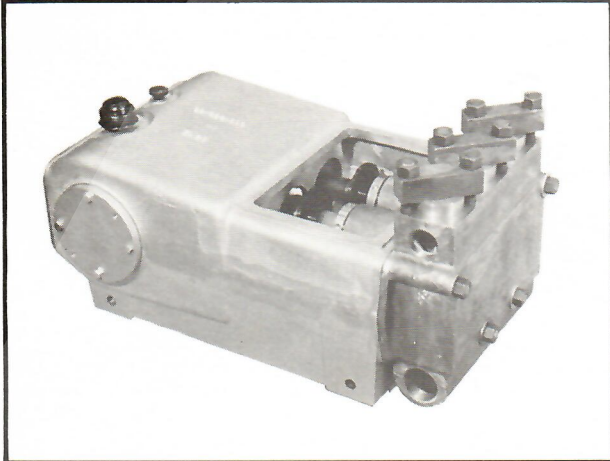


A-322 Triplex



Specifications

	English		Metric	
Pump Size (Max. Plunger Dia. x Stroke)	inches	2 x 2	mm	51 x 51
Standard Plunger Sizes	inches	1½, 1¼, 1¾, 1½, 1½, 1½, 2	mm	29, 32, 35, 38, 41, 44, 48, 51
Rated bhp at 750 rpm	hp	30	kW	22
Maximum Working Pressure: Discharge	psi	2258	kPa	15568
Suction	psi	275	kPa	1896
Two Threaded Suction Connections: (Pipe Tap)	inches	2	mm	51
Two Threaded Discharge Connections: (Pipe Tap)	inches	1½	mm	38
Crankshaft Extension: Diameter	inches	1.750	mm	44
Length	inches	4¼	mm	108
Keyway (Width x Depth)	inches	¾ x 3/16	mm	10 x 5
Rated Plunger Load	pounds	2244	N	9982
Oil Capacity: Crankcase	gallons	1.9	litres	7
Weight: Pump Only				
(On Wood Shipping Skids) (Est.)	pounds	610	kg	277

Plunger Diameter		Stuffing Box Bore	
Inches	mm	Inches	mm
1½ - 1¾	29 - 41	2¼	57
1¾ - 2	44 - 51	2½	70

Performance Data

(Volumes Indicated are Displacement of Noncompressible Fluid)
ENGLISH UNITS

Plgr. Dia. In.	Plgr. Area (Sq. In.)	Displacement Gal. Per Rev.	Max. Pressure psi	100 rpm		150 rpm		250 rpm		350 rpm		450 rpm		550 rpm		650 rpm		750 rpm	
				bpd	gpm	bpd	gpm	bpd	gpm	bpd	gpm	bpd	gpm	bpd	gpm	bpd	gpm	bpd	gpm
1½	.994	.026	2258	89	2.58	116	3.87	221	6.45	310	9.04	399	11.62	487	14.20	576	16.78	664	19.36
1¼	1.227	.032	1829	109	3.14	164	4.78	273	7.97	383	11.16	492	14.34	601	17.53	711	20.72	820	23.91
1¾	1.485	.039	1511	132	3.86	199	5.79	331	9.64	463	13.50	595	17.36	728	21.21	860	25.07	992	28.93
1½	1.767	.046	1270	157	4.59	236	6.88	393	11.47	551	16.06	709	20.65	866	25.24	1023	29.83	1181	34.42
1¾	2.074	.054	1082	185	5.39	277	8.08	462	13.47	647	18.85	831	24.24	1016	29.63	1200	35.01	1386	40.40
1½	2.405	.062	933	214	6.25	322	9.37	536	15.62	750	21.87	964	28.11	1179	34.36	1393	40.61	1607	46.86
1¾	2.761	.072	813	246	7.17	369	10.76	615	17.93	861	25.10	1107	32.27	1353	39.45	1600	46.62	1845	53.79
2	3.142	.082	714	280	8.16	420	12.24	700	20.40	980	28.56	1260	36.72	1539	44.88	1819	53.04	2100	61.20
Brake Horsepower Required				4		6		10		14		18		22		26		30	

METRIC UNITS

Plgr. Dia. mm	Plgr. Area cm²	Displacement L/rev.	Max. Pressure kPa	100 r/min.		150 r/min.		250 r/min.		350 r/min.		450 r/min.		550 r/min.		650 r/min.		750 r/min.	
				m³/d	L/s	m³/d	L/s	m³/d	L/s	m³/d	L/s	m³/d	L/s	m³/d	L/s	m³/d	L/s	m³/d	L/s
29	6.413	.100	15569	14	.16	21	.24	35	.41	49	.57	63	.73	77	.90	91	1.06	105	1.22
32	7.016	.121	12611	17	.20	26	.30	43	.50	61	.70	78	.90	95	1.11	113	1.31	130	1.51
35	9.580	.148	10418	21	.24	32	.37	53	.61	74	.85	95	1.10	116	1.34	137	1.58	158	1.82
38	11.361	.174	8757	25	.29	37	.43	63	.72	88	1.01	113	1.30	138	1.59	162	1.88	188	2.17
41	13.380	.204	7460	29	.34	44	.51	73	.85	103	1.19	132	1.53	161	1.87	191	2.21	220	2.55
44	15.516	.225	6433	34	.39	51	.59	85	.99	119	1.38	153	1.77	187	2.17	221	2.56	255	2.96
48	17.813	.273	5606	39	.45	59	.68	98	1.13	137	1.58	176	2.04	215	2.49	254	2.94	293	3.39
51	20.271	.310	4923	44	.51	67	.77	111	1.29	156	1.80	200	2.32	245	2.83	289	3.35	334	3.86
Kilowatt Required				3		5		7		10		13		16		19		22	