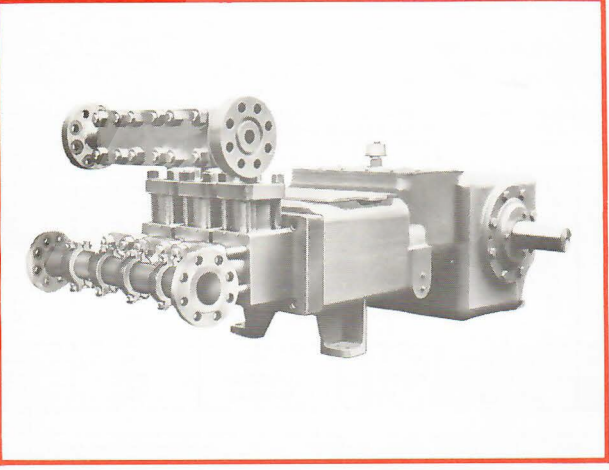


A-316 Triplex

Specifications

English Metric

Pump Size (Max. Plunger Dia. x Stroke)	inches	1 1/2 x 6	mm	48 x 152
Standard Plunger Sizes	inches	1 1/2, 1 9/16, 1 3/4, 1 11/16 and 1 1/2	mm	38, 40, 41, 43, 44, 46, and 48
Rated bhp at 400 rpm	hp	160	kW	119
Maximum Working Pressure: Discharge	psi	5650	kPa	38955
Suction	psi	720	kPa	4964
Two Flanged Suction Connections: Pipe Size	inches	3	mm	76
ANSI Rating		300	class	300
ANSI Facing		Raised Face		Raised Face
Two Flanged Discharge Connections: Pipe Size	inches	2	mm	51
ANSI Rating	class	2500	class	2500
ANSI Facing		R.T.J.		R.T.J.
Crankshaft Extension: Diameter	inches	4.495	mm	114
Length	inches	8 1/2	mm	216
Keyway (Width x Depth)	inches	1 x 3/8	mm	25 x 10
Rated Plunger Load	pounds	10000	N	44482
Oil Capacity	gallons	21	litres	79
Weight (On Wood Shipping Skids) (Est.)	pounds	4348	kg	1972



Plunger Diameter

Inches	mm
1 1/2 - 1 3/4	38 - 48

Stuffing Box Bore

Inches	mm
2 1/2	64

Performance Data

(Volumes Indicated are Displacement of Noncompressible Fluid)
ENGLISH UNITS

Plgr. Dia. In.	Plgr. Area (Sq. In.)	Displacement Gal. Per Rev.	Max. Pressure psi	100 rpm		150 rpm		200 rpm		250 rpm		300 rpm		*320 rpm		400 rpm		
				bpd	gpm	bpd	gpm	bpd	gpm	bpd	gpm	bpd	gpm	bpd	gpm	psi	bpd	gpm
1 1/2	1.7671	.1377	5650	472	13.77	708	20.65	945	27.54	1181	34.42	1417	41.31	1511	44.06	4480	1889	55.08
1 9/16	1.9175	.1494	5220	512	14.94	769	22.41	1025	29.88	1281	37.35	1537	44.82	1640	47.81	4130	2050	59.77
1 3/4	2.0739	.1616	4820	554	16.16	831	24.24	1109	32.32	1386	40.40	1663	48.48	1774	51.71	3820	2217	64.64
1 11/16	2.2365	.1743	4470	598	17.43	897	26.14	1196	34.86	1494	43.57	1793	52.28	1913	55.77	3540	2391	69.71
1 3/4	2.4053	.1874	4160	643	18.74	964	28.11	1286	37.48	1607	46.86	1929	56.23	2057	59.98	3290	2571	74.97
1 13/16	2.5082	.2011	3875	690	20.11	1034	30.16	1379	40.21	1724	50.26	2069	60.32	2207	64.34	3070	2758	80.42
1 3/4	2.7612	.2152	3620	738	21.52	1107	32.27	1476	43.03	1845	53.79	2214	64.55	2362	68.85	2870	2952	86.06
Brake Horsepower Required				50		75		100		125		150		160		160		

METRIC UNITS

Plgr. Dia. mm	Plgr. Area cm²	Displacement L/rev.	Max. Pressure kPa	100 r/min.		150 r/min.		200 r/min.		250 r/min.		300 r/min.		*320 r/min.		400 r/min.		
				m³/d	L/s	m³/d	L/s	m³/d	L/s	m³/d	L/s	m³/d	L/s	m³/d	L/s	kPa	m³/d	L/s
38	11.4009	.5212	38955	75	.87	113	1.30	150	1.74	188	2.17	225	2.61	240	2.78	30889	300	3.47
40	12.3708	.5656	35991	81	.94	122	1.41	163	1.89	204	2.36	244	2.83	261	3.02	28475	326	3.77
41	13.3802	.6117	33232	88	1.02	132	1.53	176	2.04	220	2.55	264	3.06	282	3.26	26338	352	4.08
43	14.4293	.6597	30820	95	1.10	142	1.65	190	2.20	237	2.75	285	3.30	304	3.52	24407	380	4.40
44	15.5179	.7095	28682	102	1.18	153	1.77	204	2.36	255	2.96	306	3.55	327	3.78	22684	409	4.73
46	16.6461	.7611	26717	110	1.27	164	1.90	219	2.54	274	3.17	329	3.81	351	4.06	21167	438	5.07
48	17.8139	.8145	24959	117	1.36	176	2.04	235	2.71	293	3.39	352	4.07	375	4.34	19788	469	5.43
Kilowatt Required				38		56		75		94		113		119		119		

*Pump speeds in excess of 320 rpm require specific approval of the manufacturer. Viscosity, temperature, velocities and other fluid properties or characteristics combined with the inherent mechanical efficiencies of pumps may result in less than optimum operations. We have applied this conservatism to assure you total performance.