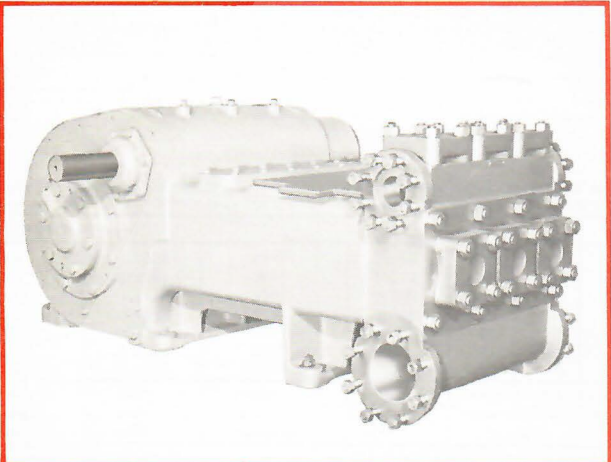


Specifications

English Metric

Pump Size (Max. Plunger Dia. x Stroke)	inches	4½ x 6	mm	114 x 152
Standard Plunger Sizes	inches	3, 3½, 3¾, 3⅞, 4, 4½, 4¾ and 4⅝	mm	76, 79, 83, 86, 89, 92, 95, 98, 102, 105, 108 and 114
Rated bhp at 320 rpm	hp	160	kW	119
Maximum Working Pressure:				
Discharge	psi	1420	kPa	9791
Suction	psi	275	kPa	1896
Two Flanged Suction Connections: Pipe Size	inches	6	mm	152
ANSI Rating	class	150	class	150
ANSI Facing		Flat Face	Flat Face	
Two Flanged Discharge Connections: Pipe Size	inches	3	mm	76
ANSI Rating	class	600	class	600
ANSI Facing		Large Recess	Large Recess	
Gear Unit Reduction Ratio: (Standard)		4.440:1		4.440:1
(Optional)		1.588:1		1.588:1
		1.776:1		1.776:1
		2.487:1		2.487:1
		3.121:1		3.121:1
		5.476:1		5.476:1
		7.130:1		7.130:1
Pinion Shaft Extension:				
Diameter	inches	2.995	mm	76
Length	inches	7¼	mm	184
Keyway (Width x Depth)	inches	¾ x ¼	mm	19 x 6
Rated Plunger Load	pounds	10000	N	44482
Oil Capacity (Crankcase + Gearcase)	gallons	13	litres	49
Weight (On Wood Shipping Skids) (Est.)	pounds	4725	kg	2143



Plunger Diameter

Inches	mm
3 - 3½	76 - 79
3¼ - 3⅞	83 - 89
3⅝ - 4½	95 - 114

Stuffing Box Bore

Inches	mm
4¾	105
4⅞	124
5¼	133

Performance Data

(Volumes Indicated are Displacement of Noncompressible Fluid)

ENGLISH UNITS

Plgr. Dia. In.	Plgr. Area (Sq. In.)	Displacement Gal. Per Rev.	Max. Pressure psi	100 rpm		150 rpm		200 rpm		250 rpm		300 rpm		320 rpm	
				bpd	gpm	bpd	gpm	bpd	gpm	bpd	gpm	bpd	gpm	bpd	gpm
3	7.0686	.5508	1420	1889	55.08	2834	82.62	3778	110.16	4723	137.70	5668	165.24	6046	176.26
3½	7.6699	.5977	1300	2050	59.77	3075	89.65	4100	119.53	5125	149.41	6150	179.30	6559	191.23
3¾	8.2958	.6464	1200	2217	64.64	3326	96.96	4434	129.28	5543	161.61	6652	193.93	7095	206.85
3⅞	8.9462	.6971	1110	2391	69.71	3587	104.57	4782	139.42	5978	174.28	7173	209.13	7651	223.07
4	9.6211	.7497	1040	2571	74.97	3857	112.45	5143	149.94	6429	187.42	7714	224.91	8228	239.87
3½	10.321	.8042	965	2758	80.42	4138	120.63	5517	160.84	6896	201.05	8275	241.26	8827	257.34
3¾	11.045	.8606	905	2952	86.06	4428	129.09	5904	172.12	7380	215.16	8856	258.19	9446	275.39
3⅞	11.793	.9190	845	3152	91.90	4728	137.84	6304	183.79	7880	229.74	9456	275.69	10086	294.05
4	12.566	.9792	795	3359	97.92	5038	146.88	6717	195.84	8397	244.80	10076	293.76	10747	313.31
4½	13.364	1.0414	745	3572	104.14	5358	156.20	7144	208.27	8930	260.34	10716	312.41	11429	333.22
4¾	14.186	1.1054	705	3792	110.54	5687	165.81	7583	221.08	9479	276.36	11375	331.63	12133	353.73
4⅝	15.904	1.2393	625	4251	123.93	6376	185.89	8502	247.86	10627	309.82	12752	371.79	13603	396.58

Brake Horsepower	50	75	100	125	150	160
------------------	----	----	-----	-----	-----	-----

METRIC UNITS

Plgr. Dia. mm.	Plgr. Area cm²	Displacement L/rev.	Max. Pressure kPa	100 r/min.		150 r/min.		200 r/min.		250 r/min.		300 r/min.		320 r/min.	
				m³/d	L/s	m³/d	L/s	m³/d	L/s	m³/d	L/s	m³/d	L/s	m³/d	L/s
76	45.6037	2.0850	9791	300	3.47	450	5.21	600	6.95	751	8.69	901	10.42	961	11.12
79	49.4832	2.2624	8963	326	3.77	489	5.66	652	7.54	814	9.43	977	11.31	1042	12.07
83	53.5210	2.4470	8274	352	4.08	529	6.12	705	8.16	881	10.20	1057	12.23	1128	13.05
86	57.7171	2.6388	7653	380	4.40	570	6.60	760	8.80	950	11.00	1140	13.19	1216	14.07
89	62.0717	2.8379	7171	409	4.73	613	7.09	817	9.46	1022	11.82	1226	14.19	1308	15.14
92	66.5845	3.0442	6653	438	5.07	658	7.61	877	10.15	1096	12.68	1315	15.22	1403	16.24
95	71.2557	3.2578	6240	469	5.43	704	8.14	938	10.86	1173	13.57	1407	16.29	1501	17.37
98	76.0853	3.4786	5826	501	5.80	751	8.70	1002	11.60	1252	14.49	1503	17.39	1603	18.55
102	81.0732	3.7067	5481	534	6.18	801	9.27	1068	12.36	1334	15.44	1601	18.53	1708	19.77
105	86.2194	3.9420	5137	568	6.57	851	9.85	1135	13.14	1419	16.42	1703	19.71	1816	21.02
108	91.5240	4.1845	4861	603	6.97	904	10.46	1205	13.95	1506	17.44	1808	20.92	1928	22.32
114	102.6083	4.6912	4309	676	7.82	1013	11.73	1351	15.64	1689	19.55	2027	23.46	2162	25.02

Kilowatt Required	38	56	75	94	113	119
-------------------	----	----	----	----	-----	-----

ENGLISH AND METRIC

Gear Unit Pinion	1.588:1	159	238	318	397	476	508
Shaft r/min. at	1.776:1	178	266	355	444	533	568
Gear Ratios of:	2.487:1	249	373	497	622	746	796
	3.121:1	312	468	624	780	936	998
(Std.)	4.440:1	444	666	888	1110	1332	1421
	5.476:1	548	821	1095	1369	1643	1752
	7.130:1	713	1069	1426	1782	2139	2282