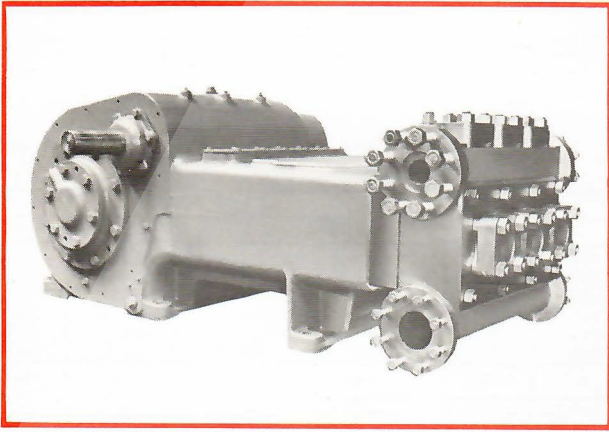


336P-ST Triplex With Forged Steel Fluid End



Specifications

	English		Metric	
Pump Size (Max. Plunger Dia. x Stroke)	inches	3 x 6	mm	76 x 152
Standard Plunger Sizes	inches	1 3/4, 1 7/8, 2, 2 1/8, 2 1/4, 2 3/8, 2 1/2, 2 5/8, and 3	mm	44, 48, 51, 54, 57, 60, 64, 67, 70, 73 and 76
Rated bhp at 320 rpm	hp	160	kW	119
Maximum Working Pressure:				
Discharge	psi	3180	kPa	21925
Suction	psi	275	kPa	1896
Two Flanged Suction Connections: Pipe Size	inches	4	mm	102
ANSI Rating	class	150	class	150
ANSI Facing		Flat Face	Flat Face	
Two Flanged Discharge Connections: Pipe Size	inches	2 1/2	mm	64
ANSI Rating	class	1500	class	1500
ANSI Facing		Large Recess	Large Recess	
Gear Unit Reduction Ratio: (Standard)		4.440:1		4.440:1
(Optional)		1.588:1, 1.776:1, 2.487:1, 3.121:1, 5.476:1, 7.130:1		1.588:1, 1.776:1, 2.487:1, 3.121:1, 5.476:1, 7.130:1
Pinion Shaft Extension:				
Diameter	inches	2.995	mm	76
Length	inches	7 1/4	mm	184
Keyway (Width x Depth)	inches	3/4 x 1/4	mm	19 x 6
Rated Plunger Load	pounds	10000	N	44482
Oil Capacity: (Crankcase + Gearcase)	gallons	13	litres	49
Weight (On Wood Shipping Skids) (Est.)	pounds	4861	kg	2205

Plunger Diameter		Stuffing Box Bore	
Inches	mm	Inches	mm
1 3/4 - 2 1/8	44 - 60	3 3/4	83
2 1/2 - 3	64 - 76	4 1/8	105

Performance Data

(Volumes Indicated are Displacement of Noncompressible Fluid)

ENGLISH UNITS

Plgr. Dia. In.	Plgr. Area (Sq. In.)	Displacement Per Rev.	Max. Pressure psi	100 rpm		150 rpm		200 rpm		250 rpm		300 rpm		320 rpm	
				bpd	gpm	bpd	gpm	bpd	gpm	bpd	gpm	bpd	gpm	bpd	gpm
1 3/4	2.4053	.1874	3180	643	18.74	964	28.11	1286	37.48	1607	46.86	1929	56.23	2057	59.98
1 7/8	2.7612	.2152	3180	738	21.52	1107	32.27	1476	43.03	1845	53.79	2214	64.55	2362	68.85
2	3.1416	.2448	3180	840	24.48	1259	36.72	1679	48.96	2099	61.20	2519	73.44	2687	78.34
2 1/8	3.5466	.3098	2820	948	27.64	1422	41.45	1896	55.27	2370	69.09	2844	82.91	3033	88.43
2 1/4	3.9761	.3452	2520	1063	30.98	1594	46.47	2125	61.96	2657	77.46	3188	92.95	3401	99.14
2 3/8	4.4301	.3452	2260	1184	34.52	1776	51.78	2368	69.04	2960	86.30	3552	103.56	3789	110.47
2 1/2	4.9087	.3825	2040	1312	38.25	1968	57.37	2624	76.50	3280	95.62	3936	114.75	4198	122.40
2 5/8	5.4119	.4217	1840	1446	42.17	2170	63.26	2893	84.34	3616	104.33	4339	126.51	4629	134.95
2 3/4	5.9396	.4628	1680	1587	46.28	2381	69.42	3175	92.56	3969	115.71	4762	138.85	5080	148.10
2 7/8	6.4918	.5059	1540	1735	50.59	2603	75.88	3470	101.17	4338	126.46	5205	151.76	5552	161.87
3	7.0686	.5508	1420	1889	55.08	2834	82.62	3778	110.16	4723	137.70	5668	165.24	6046	176.26
Brake Horsepower Required					50		75		100		125		150		160

METRIC UNITS

Plgr. Dia. mm.	Plgr. Area cm²	Displacement L/rev.	Max. Pressure kPa	100 r/min.		150 r/min.		200 r/min.		250 r/min.		300 r/min.		320 r/min.	
				m³/d	L/s	m³/d	L/s	m³/d	L/s	m³/d	L/s	m³/d	L/s	m³/d	L/s
44	15.6179	.7095	21925	102	1.18	153	1.77	204	2.36	255	2.96	306	3.55	327	3.78
48	17.8139	.8145	21925	117	1.36	176	2.04	235	2.71	293	3.39	352	4.07	375	4.34
51	20.2683	.9267	21925	133	1.54	200	2.32	267	3.09	334	3.86	400	4.63	427	4.94
54	22.8810	1.0461	19443	151	1.74	226	2.62	301	3.49	377	4.36	452	5.23	482	5.58
57	25.6521	1.1728	17375	169	1.95	253	2.93	338	3.91	422	4.89	507	5.86	540	6.25
60	28.5815	1.3067	15582	188	2.18	282	3.27	376	4.36	470	5.44	565	6.53	602	6.97
64	31.6692	1.4479	14065	208	2.41	313	3.62	417	4.83	521	6.03	625	7.24	667	7.72
67	34.9177	1.5963	12686	230	2.66	345	3.99	460	5.32	575	6.65	690	7.98	736	8.51
70	38.31	1.7520	11583	252	2.92	378	4.38	505	5.84	631	7.30	757	8.76	807	9.34
73	41.8825	1.9149	10618	276	3.19	414	4.79	551	6.38	689	7.98	827	9.57	882	10.21
76	45.6037	2.0850	9791	300	3.47	450	5.21	600	6.95	751	8.69	901	10.42	961	11.12
Kilowatt Required					38		56		75		94		113		119

ENGLISH AND METRIC

Gear Unit Pinion Shaft r/min.		159	238	318	397	476	508
at Gear Ratios of:	1.588:1	178	267	356	445	534	570
	1.776:1	249	373	497	622	746	796
	2.487:1	312	468	624	780	936	998
	3.121:1	444	666	888	1110	1332	1421
	5.476:1	548	821	1095	1369	1643	1752
	7.130:1	713	1069	1426	1782	2139	2282