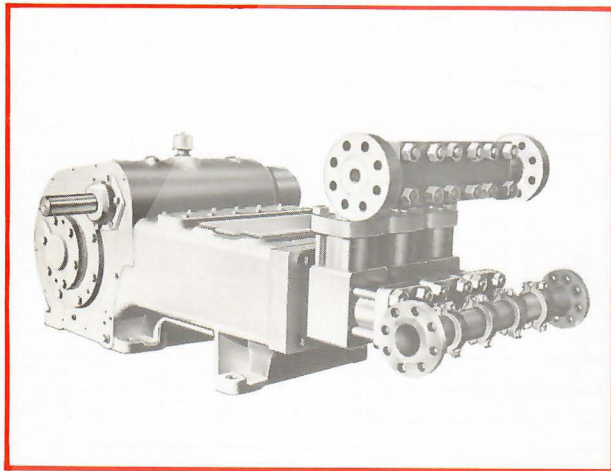


316-P Triplex



Specifications

		English	Metric
Pump Size (Max. Plunger Dia. x Stroke)	inches	1 7/8 x 6	mm 48 x 152
Standard Plunger Sizes	inches	1 1/2, 1 5/8, 1 7/8, 1 11/16, 1 3/4, 1 13/16, and 1 7/8	mm 38, 40, 41, 43, 44, 46, and 48
Rated bhp at 320 rpm	hp	160	kW 119
Maximum Working Pressure:			
Discharge	psi	5650	kPa 38955
Suction	psi	720	kPa 4964
Two Flanged Suction Connections: Pipe Size	inches	3	mm 76
ANSI Rating	class	300	class 300
ANSI Facing			
Two Flanged Discharge Connections: Pipe Size	inches	2	mm 51
ANSI Rating	class	2500	class 2500
ANSI Facing			
Gear Unit Reduction Ratio: (Standard)		R.T.J.	R.T.J.
(Optional)		4.440:1	4.440:1
		1.588:1	1.588:1
		1.776:1	1.776:1
		2.487:1	2.487:1
		3.121:1	3.121:1
		5.476:1	5.476:1
		7.130:1	7.130:1
Pinion Shaft Extension:			
Diameter	inches	2.995	mm 76
Length	inches	7 3/4	mm 184
Keyway (Width x Depth)	inches	3/4 x 1/4	mm 19 x 6
Rated Plunger Load	pounds	10000	N 44482
Oil Capacity (Crankcase + Gearcase)	gallons	13	litres 49
Weight (On Wood Shipping Skids) (Est.)	pounds	5895	kg 2674

Plunger Diameter		Stuffing Box Bore	
Inches	mm	Inches	mm
1 1/2 - 1 7/8	38 - 48	2 1/2	63

Performance Data

(Volumes Indicated are Displacement of Noncompressible Fluid)

ENGLISH UNITS

Plgr. Dia. In.	Plgr. Area (Sq. In.)	Displacement Gal. Per Rev.	Max. Pressure psi	100 rpm		150 rpm		200 rpm		250 rpm		300 rpm		320 rpm	
				bpd	gpm	bpd	gpm	bpd	gpm	bpd	gpm	bpd	gpm	bpd	gpm
1 1/2	1.7671	.1376	5650	472	13.77	708	20.65	945	27.54	1181	34.42	1417	41.31	1511	44.06
1 5/8	1.9175	.1494	5220	512	14.94	769	22.41	1025	29.88	1281	37.35	1537	44.82	1640	47.81
1 7/8	2.0739	.1616	4820	554	16.16	831	24.24	1109	32.32	1386	40.40	1663	48.48	1774	51.71
1 11/16	2.2365	.1743	4470	598	17.43	897	26.14	1196	34.86	1494	43.57	1793	52.28	1913	55.77
1 3/4	2.4053	.1874	4160	643	18.74	964	28.11	1286	37.48	1607	46.86	1929	56.23	2057	59.98
1 13/16	2.5802	.2011	3875	690	20.11	1034	30.16	1379	40.21	1724	50.26	2069	60.32	2207	64.34
1 7/8	2.7612	.2152	3620	738	21.52	1107	32.27	1476	43.03	1845	53.79	2214	64.55	2362	68.85
Brake Horsepower Required				50		75		100		125		150		160	

METRIC UNITS

Plgr. Dia. mm	Plgr. Area cm²	Displacement L/rev.	Max. Pressure kPa	100 r/min.		150 r/min.		200 r/min.		250 r/min.		300 r/min.		320 r/min.	
				m³/d	L/s	m³/d	L/s	m³/d	L/s	m³/d	L/s	m³/d	L/s	m³/d	L/s
38	11.4009	.5212	38955	75	.87	113	1.30	150	1.74	188	2.17	225	2.61	240	2.78
40	12.3708	.5656	35991	81	.94	122	1.41	163	1.89	204	2.36	244	2.83	261	3.02
41	13.3802	.6117	33233	88	1.02	132	1.53	176	2.04	220	2.55	264	3.06	282	3.26
43	14.4293	.6597	30820	95	1.10	142	1.65	190	2.20	237	2.75	285	3.30	304	3.52
44	15.5179	.7095	28682	102	1.18	153	1.77	204	2.36	255	2.96	306	3.55	327	3.78
46	16.6461	.7611	26717	110	1.27	164	1.90	219	2.54	274	3.17	329	3.81	351	4.06
48	17.8139	.8145	24959	117	1.36	176	2.04	235	2.71	293	3.39	352	4.07	375	4.34
Kilowatt Required				38		56		75		94		113		119	

ENGLISH AND METRIC

Gear Unit Pinion Shaft r/min. at Gear Ratio of:		153	229	306	382	459	570	696	822
1.588:1		153	229	306	382	459	570	696	822
1.776:1		178	267	356	445	534	660	796	952
2.487:1		249	373	497	622	746	924	1116	1332
3.121:1		312	468	624	780	936	1164	1416	1716
(Std.) 4.440:1		444	666	888	1110	1332	1664	2016	2448
5.476:1		548	821	1095	1369	1643	2054	2482	2968
7.130:1		713	1069	1426	1782	2139	2674	3228	3912